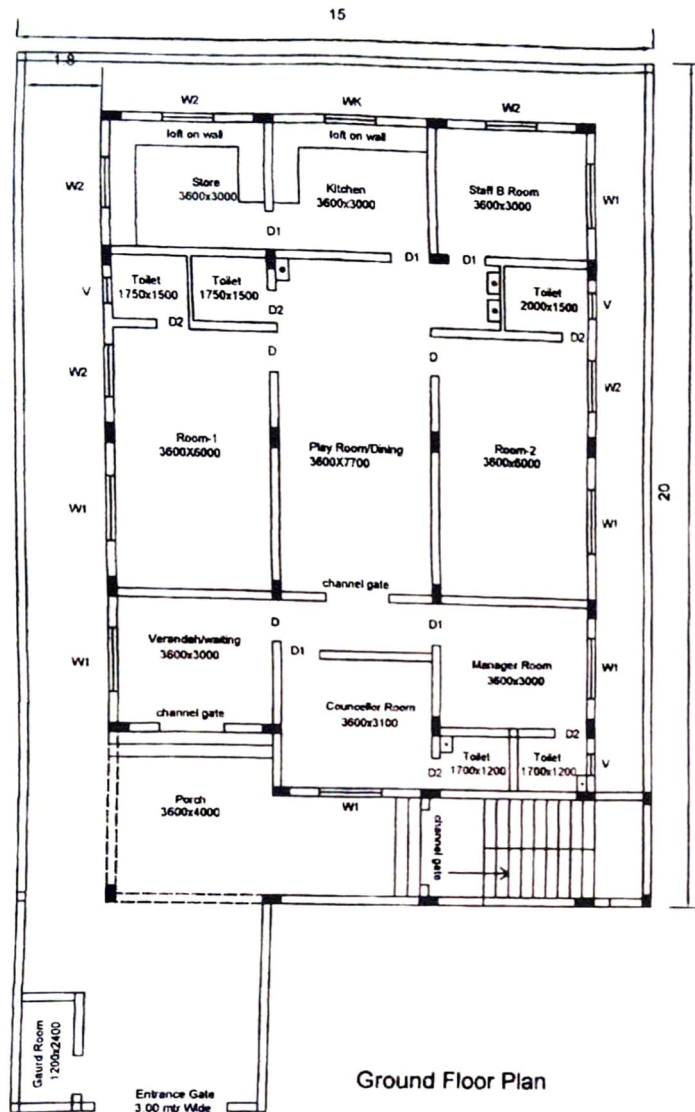


SEPECIALIZED ADOPTION AGENCY (SAA) BUILDING PLAN, KANKER



OPENING DETAIL

WINDOW DETAIL

- W1 (1500X1200) = 3 Track Powder Coated Alu. Window with 4mm float glass and Grill
- W2 (1200X1200) = 3 Track Powder Coated Alu. Window with 4mm float glass and Grill
- Wk (1200X1050) = 3 Track Powder Coated Alu. Window with 4mm float glass and Grill
- Wk1 (1000X1050) = 3 Track Powder Coated Alu. Window with 4mm float glass and Grill
- V (600X600) = Alu. Window with 4mm float glass and Grill
- V1 (450X300) = Ventilation in all rooms

DOOR DETAIL

- D (1000X2100) = 35mm Flush Door both Face veneers
- D1 (900X2100) = 35mm Flush Door both Face veneers
- D2 (750X2100) = Alu. Door Shutter with Alu. Frame
- D3 (1200X2400) = 35mm Flush Door both Face veneers

**CHHATTISGARH HOUSING BOARD,
DIV. - KONDAGAON**

Ground Floor Built-up Area = 196.58 Sqm

First Floor Built-up Area = 189.38 Sqm

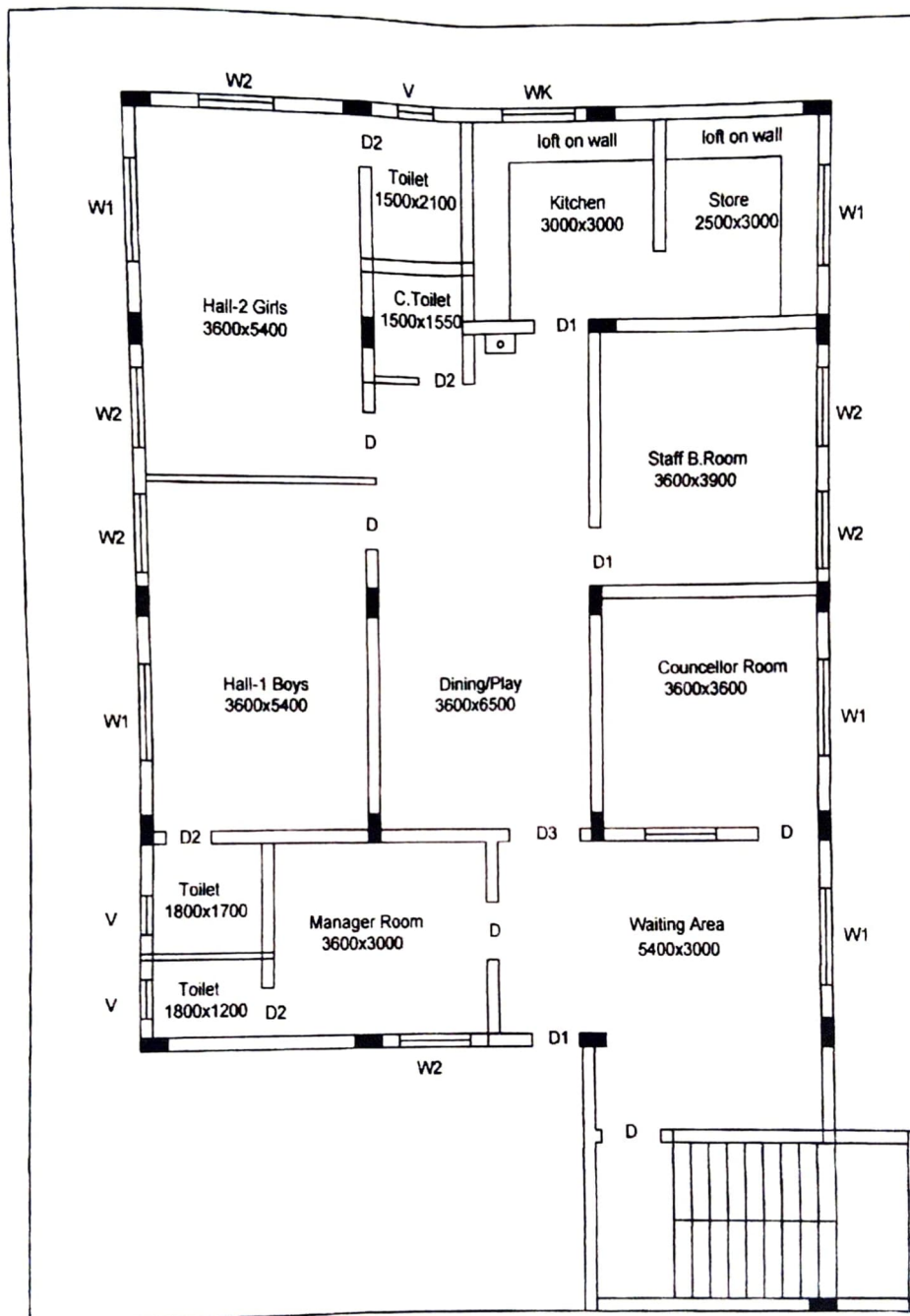
Second Floor Built-up Area = 67.03 Sqm

Total Built-up Area = 452.99 Sqm

[Signature]
**Joint Programme Officer
Women & Child Development
North Basrae Kanker(C.G.)**

EXSISTING ROAD

CHILD LINE BUILDING PLAN, KANKER

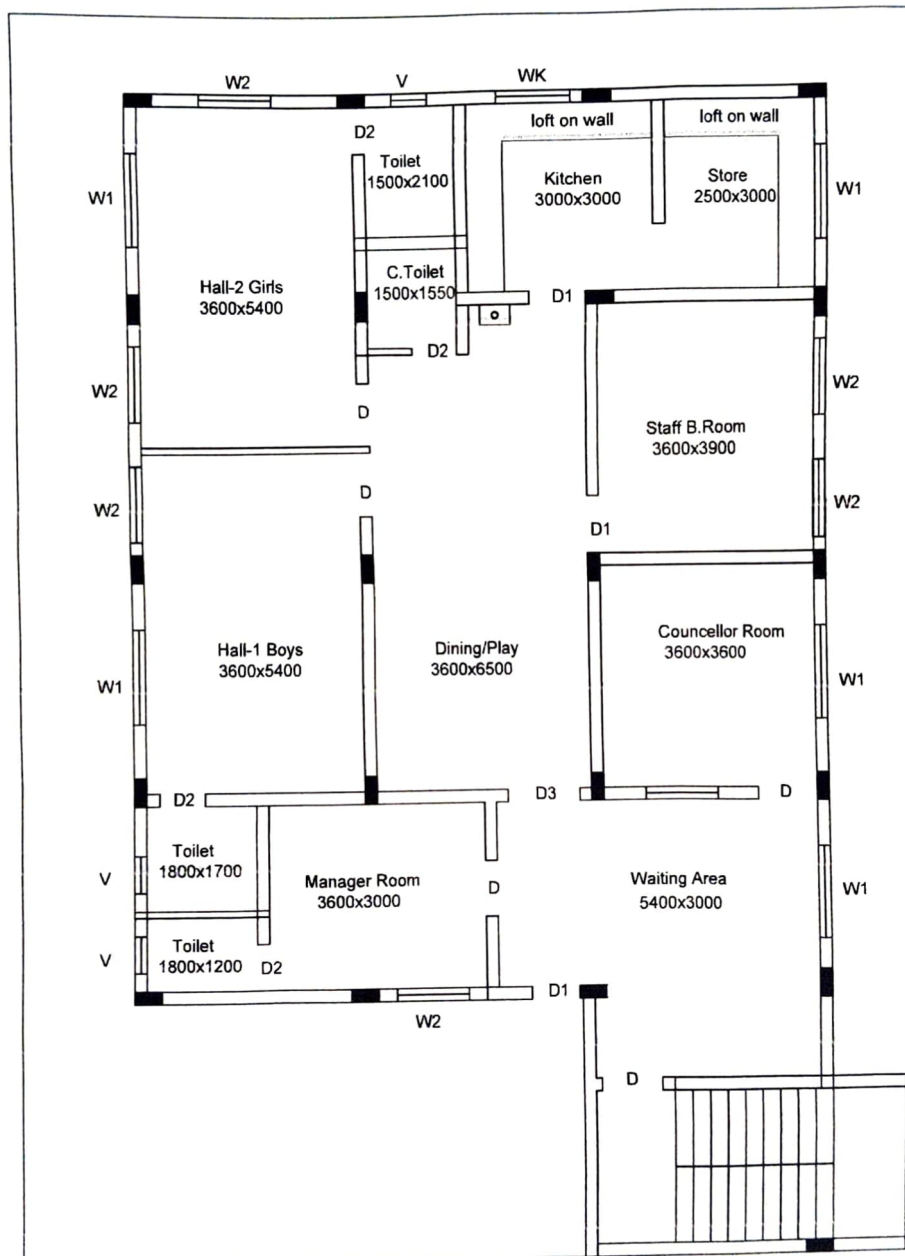


Built-up Area = 189.38 Sqm

First Floor Plan

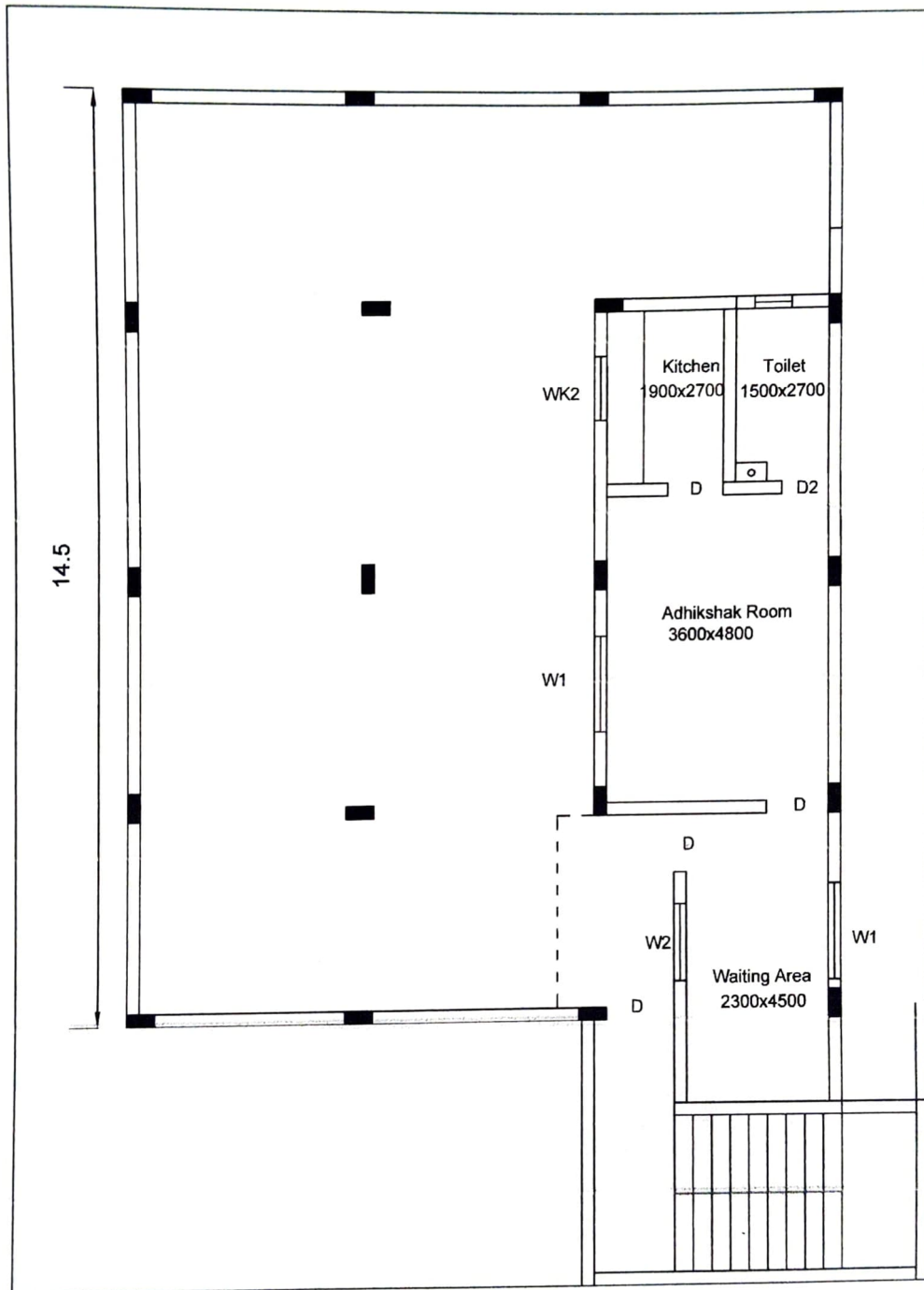
Prof. 2/3/20
 Distt. Programme Officer
 Women & Child Development
 North Basrae Kanker (C.G.)

CHILD LINE BUILDING PLAN, KANKER



Built-up Area = 189.38 Sqm

Second Floor Plan



Built-up Area = 67.03 Sqm

Terrace Floor Plan